

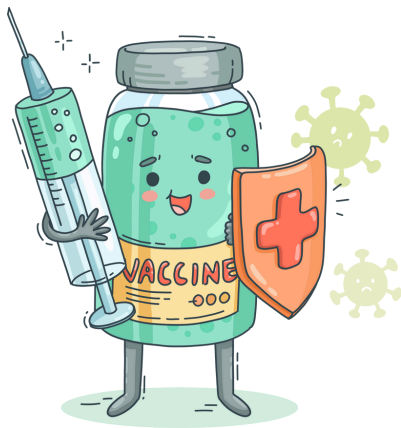


# ABSOLUTE SCOOP

## DID YOU KNOW?

The CDC offers great resources that can be downloaded on your mobile device to help you determine what vaccines are needed based on an individual's age and health conditions.

- CDC Vaccine Schedules
- PneumoRecs Vax Advisor



## VACCINE RECOMMENDATIONS

*Written by Beth Husted, PharmD, R.Ph., BCMTMS, Pharmacy Director*

It was great watching athletes from countries all around the world, with various talents and abilities, compete in the Olympics. Not only does it take dedication and training, these individuals have to make sure they are at their healthiest in order to perform their best for the chance to win a medal. Although you might not be training to be an Olympic athlete, you can help yourself and your facility win a medal in "health" by making sure you, as well as the residents and fellow employees at your facility, are up to date with all recommended immunizations.

### Influenza (Flu)

The Centers for Disease Control and Prevention (CDC) continues to recommend annual flu vaccines for everyone 6 months and older. People 65 years of age and older should receive a high dose or adjuvanted product; however, if one of these preferentially recommended vaccines are not available at the time of administration, individuals in this age group should get a standard flu vaccine. There are no specific product suggestions for any other age group at this time. Because there are many circulating flu viruses, the composition of the flu vaccine is reviewed and updated annually to best match what research suggests will prevent the most flu cases. For the 2024-2025 season, only trivalent (three component) vaccines are available.

### Coronavirus Disease 2019 (COVID-19)

In June, the Food and Drug Administration (FDA) advised manufacturers that all COVID-19 vaccines should transition to monovalent products, targeting the JN.1 or KP.2 variants. We anticipate the release of the updated 2024-2025 formulation sometime this fall. Currently, the CDC recommends that everyone 6 months and older receive a dose of the updated 2024-2025 vaccine regardless of previous vaccination status. As soon as the updated products are available, this new recommendation will go into effect, which should help protect against the virus variants that are currently responsible for most infections and corresponding hospitalizations. Although flu and COVID vaccines are safe to receive at the same time, there is not yet a combined product available.

### Other Vaccines

#### Respiratory Syncytial Virus (RSV)

The major change regarding this immunization is the shift from shared clinical decision-making to a true recommendation. All adults 75 years of age and older or adults ages 60 to 74 who are at an increased risk of severe disease (i.e. those residing in a long-term care facility) should receive a single dose of the RSV vaccine. Any approved product, Abrysvo (Pfizer), Arexvy (GSK), or mResvia (Moderna), can be provided as a one-time intramuscular injection; of note, this is not currently an annual vaccine and should not be administered every RSV season. The RSV vaccine can also be co-administered with the flu vaccine.

*Continued on next page...*



## Pneumococcal Disease (Pneumonia)

There are many products available to help protect against pneumococcal pneumonia including Pneumococcal Conjugate Vaccine (PCV15, PCV20 and PCV21) options as well as the Pneumococcal Polysaccharide Vaccine (PPSV23). New recommendations were released in June, indicating that all adults 65 years of age or older or adults ages 19 to 64 with certain underlying conditions should receive either PCV20 or PCV21 alone or a dose of PCV15 followed by PPSV23; this specifically refers to those that have not received a PCV or have an unknown vaccine history. This can definitely be tricky to navigate in the long-term care population as many of these individuals have already received another PCV or PPSV product at some point in their lives. To help efficiently determine which pneumonia vaccine may be needed on a case-by-case basis, the CDC created an app that can be downloaded on any mobile device called **PneumoRecs Vax Advisor**. This tool can really simplify determining which pneumococcal vaccine(s) are needed.

Although both of these other vaccines carry risk-based recommendations, they are not included in standard clinic offerings provided by Absolute at this time.

Flu, COVID, and other respiratory viruses are among the leading causes of avoidable, costly hospital admissions for nursing facility residents, which is why Absolute Pharmacy is committed to making sure residents and staff have the opportunity to receive annual and other recommended vaccines for administration this fall. By now, you should have received a **2024-2025 Vaccine Order Form**. Absolute Pharmacy offers two options for supplying annual vaccines:

- Bulk Program: Absolute Pharmacy delivers vaccine to your facility to be administered by facility nurses.
- Clinic Program: Absolute Pharmacy will come on-site to administer vaccines to residents on a scheduled clinic date. A Customer Service Account Manager will work with you to schedule your clinic and bring the requested vaccine(s) on-site that day.

Absolute offers both regular and high dose/adjuvanted (indicated for those 65 years of age and older) flu vaccines, the updated COVID vaccine, and other recommended vaccines. To receive more information or with questions about vaccine ordering, please contact [vaccines@abshealth.com](mailto:vaccines@abshealth.com).

Now that you have started your training by being in the know about the most recent vaccine recommendations, it's time to go for the gold and protect your residents and fellow employees by getting updated flu and COVID shots this season!

## About the Author



*Outside of work, Beth enjoys spending time with her 3 kids and husband. You can often find her on the soccer field & basketball court, or enjoying some white wine (lol).*

Beth Husted, PharmD, RPh, is the Director of Pharmacy at Absolute. She joined us in early 2019 and quickly became a respected leader and trusted advisor. She initiated our "Follow Me Home" discharge program and took on leadership of the Consultant Pharmacists and their many clinical initiatives and services. During the pandemic, Beth led our COVID-19 vaccination efforts including acquisition of the vaccine to become a Phase 1A provider - one of nine LTC pharmacies nationally! Due to her success with the COVID-19 vaccine initiative, she quickly earned an honorary Queen of COVID Award. Beth is a graduate of Ohio Northern University.

### What do you call a cold day in September?

Septem-brrrrr.



### What do you call a small pepper in late autumn?

A little chili.